

● Standard type model number list (model: KS····SQ / KS····SQG)

● : Model availability

Thread size					Model number	Minimum orifice diameter [mm]	Flow rate [L/min] at following pressure [MPa]							Spray angle at 0.3 MPa
1/4	3/8	1/2	3/4	1			0.05	0.1	0.2	0.3	0.5	0.7	1.0	
●					00865	0.5	0.37	0.50	0.67	0.80	1.00	1.15	1.34	65°
●					00890	0.5	0.37	0.50	0.67	0.80	1.00	1.15	1.34	90°
●					0165	0.6	0.46	0.62	0.84	1.00	1.25	1.44	1.68	65°
●					0190	0.6	0.46	0.62	0.84	1.00	1.25	1.44	1.68	90°
●	●				01565	0.7	0.68	0.94	1.26	1.50	1.87	2.2	2.5	65°
●	●				01590	0.7	0.68	0.94	1.26	1.50	1.87	2.2	2.5	90°
●	●				0265	0.8	0.93	1.25	1.68	2.0	2.5	2.9	3.4	65°
●	●				0290	0.8	0.93	1.25	1.68	2.0	2.5	2.9	3.4	90°
●	●	●			0365	1.0	1.39	1.87	2.5	3.0	3.7	4.3	5.0	65°
●	●	●			0390	1.0	1.39	1.87	2.5	3.0	3.7	4.3	5.0	90°
●	●	●			0465	1.2	1.85	2.5	3.4	4.0	5.0	5.8	6.7	65°
●	●	●			0490	1.2	1.85	2.5	3.4	4.0	5.0	5.8	6.7	90°
●	●	●			04110W	1.2	1.85	2.5	3.4	4.0	5.0	5.8	6.7	110°
●	●	●			0665	1.4	2.8	3.7	5.0	6.0	7.5	8.6	10.1	65°
●	●	●			0690	1.4	2.8	3.7	5.0	6.0	7.5	8.6	10.1	90°
●	●	●			06110W	1.4	2.8	3.7	5.0	6.0	7.5	8.6	10.1	110°
●	●	●			0865	1.6	3.7	5.0	6.7	8.0	10.0	11.5	13.4	65°
●	●	●			0890	1.6	3.7	5.0	6.7	8.0	10.0	11.5	13.4	90°
●	●	●			08110W	1.6	3.7	5.0	6.7	8.0	10.0	11.5	13.4	110°
●	●	●	●		1065	1.9	4.6	6.2	8.4	10.0	12.5	14.4	16.8	65°
●	●	●	●		1090	1.9	4.6	6.2	8.4	10.0	12.5	14.4	16.8	90°
●	●	●	●		10110W	1.9	4.6	6.2	8.4	10.0	12.5	14.4	16.8	110°
●	●	●	●		1565	2.2	6.9	9.4	12.6	15.0	18.7	21.6	25.2	65°
●	●	●	●		1590	2.2	6.9	9.4	12.6	15.0	18.7	21.6	25.2	90°
●	●	●	●		15110W	2.2	6.9	9.4	12.6	15.0	18.7	21.6	25.2	110°
	●	●	●		2065	2.5	9.3	12.5	16.8	20.0	24.9	28.8	33.6	65°
	●	●	●		2090	2.5	9.3	12.5	16.8	20.0	24.9	28.8	33.6	90°
	●	●	●		20110W	2.5	9.3	12.5	16.8	20.0	24.9	28.8	33.6	110°
		●	●		2565	2.8	11.6	15.6	21.0	25.0	31.2	36.0	42.0	65°
		●	●		2590	2.8	11.6	15.6	21.0	25.0	31.2	36.0	42.0	90°
		●	●		25110W	2.8	11.6	15.6	21.0	25.0	31.2	36.0	42.0	110°
		●	●		3065	3.1	13.9	18.7	25.2	30.0	37.4	43.2	50.4	65°
		●	●		3090	3.1	13.9	18.7	25.2	30.0	37.4	43.2	50.4	90°
		●	●		30110W	3.1	13.9	18.7	25.2	30.0	37.4	43.2	50.4	110°
		●	●		3565	3.4	16.2	21.8	29.4	35.0	43.6	50.4	58.8	65°
		●	●		3590	3.4	16.2	21.8	29.4	35.0	43.6	50.4	58.8	90°
		●	●		35110W	3.4	16.2	21.8	29.4	35.0	43.6	50.4	58.8	110°
			●	●	4065	3.7	18.5	25.0	33.6	40.0	49.9	57.6	67.2	65°
			●	●	4090	3.7	18.5	25.0	33.6	40.0	49.9	57.6	67.2	90°
			●	●	40110W	3.7	18.5	25.0	33.6	40.0	49.9	57.6	67.2	110°
			●	●	4565	4.0	20.8	28.1	37.8	45.0	56.1	64.8	75.6	65°
			●	●	4590	4.0	20.8	28.1	37.8	45.0	56.1	64.8	75.6	90°
			●	●	45110W	4.0	20.8	28.1	37.8	45.0	56.1	64.8	75.6	110°
			●	●	5065	4.3	23.2	31.2	42.0	50.0	62.3	72.0	84.0	65°
			●	●	5090	4.3	23.2	31.2	42.0	50.0	62.3	72.0	84.0	90°
			●	●	50110W	4.3	23.2	31.2	42.0	50.0	62.3	72.0	84.0	110°
				●	6065	4.6	27.8	37.4	50.4	60.0	74.8	86.4	101	65°
				●	6090	4.6	27.8	37.4	50.4	60.0	74.8	86.4	101	90°
				●	60110W	4.6	27.8	37.4	50.4	60.0	74.8	86.4	101	110°
				●	7065	4.9	32.4	43.7	58.8	70.0	87.3	101	118	65°
				●	7090	4.9	32.4	43.7	58.8	70.0	87.3	101	118	90°
				●	70110W	4.9	32.4	43.7	58.8	70.0	87.3	101	118	110°
				●	8065	5.2	37.1	49.9	67.3	80.0	99.7	115	134	65°
				●	8090	5.2	37.1	49.9	67.3	80.0	99.7	115	134	90°
				●	80110W	5.2	37.1	49.9	67.3	80.0	99.7	115	134	110°
				●	9065	5.6	41.7	56.2	75.7	90.0	112	130	151	65°
				●	9090	5.6	41.7	56.2	75.7	90.0	112	130	151	90°
				●	90110W	5.6	41.7	56.2	75.7	90.0	112	130	151	110°

Full-cone Pattern Nozzles

B
18

Separate type

Square Spray Nozzle

● Standard type model number list (model: KS····SQS / KS····SQHH, thread size: 1/4 to 1) ●: Model availability

Male thrd size					Model number	Minimum orifice diameter [mm]	Flow rate [L/min] at following pressure [MPa]							Spray angle at 0.3 MPa
1/4	3/8	1/2	3/4	1			0.05	0.1	0.2	0.3	0.5	0.7	1.0	
●					00865	0.5	0.37	0.50	0.67	0.80	1.00	1.15	1.34	65°
●					00890	0.5	0.37	0.50	0.67	0.80	1.00	1.15	1.34	90°
●					0165	0.6	0.46	0.62	0.84	1.00	1.25	1.44	1.68	65°
●					0190	0.6	0.46	0.62	0.84	1.00	1.25	1.44	1.68	90°
●	●				01565	0.7	0.68	0.94	1.26	1.50	1.87	2.2	2.5	65°
●	●				01590	0.7	0.68	0.94	1.26	1.50	1.87	2.2	2.5	90°
●	●				0265	0.8	0.93	1.25	1.68	2.0	2.5	2.9	3.4	65°
●	●				0290	0.8	0.93	1.25	1.68	2.0	2.5	2.9	3.4	90°
●	●	●			0365	1.0	1.39	1.87	2.5	3.0	3.7	4.3	5.0	65°
●	●	●			0390	1.0	1.39	1.87	2.5	3.0	3.7	4.3	5.0	90°
●	●	●			0465	1.2	1.85	2.5	3.4	4.0	5.0	5.8	6.7	65°
●	●	●			0490	1.2	1.85	2.5	3.4	4.0	5.0	5.8	6.7	90°
●	●	●			04110W	1.2	1.85	2.5	3.4	4.0	5.0	5.8	6.7	110°
●	●	●			0665	1.4	2.8	3.7	5.0	6.0	7.5	8.6	10.1	65°
●	●	●			0690	1.4	2.8	3.7	5.0	6.0	7.5	8.6	10.1	90°
●	●	●			06110W	1.4	2.8	3.7	5.0	6.0	7.5	8.6	10.1	110°
●	●	●			0865	1.6	3.7	5.0	6.7	8.0	10.0	11.5	13.4	65°
●	●	●			0890	1.6	3.7	5.0	6.7	8.0	10.0	11.5	13.4	90°
●	●	●			08110W	1.6	3.7	5.0	6.7	8.0	10.0	11.5	13.4	110°
●	●	●	●		1065	1.9	4.6	6.2	8.4	10.0	12.5	14.4	16.8	65°
●	●	●	●		1090	1.9	4.6	6.2	8.4	10.0	12.5	14.4	16.8	90°
●	●	●	●		10110W	1.9	4.6	6.2	8.4	10.0	12.5	14.4	16.8	110°
●	●	●	●		1565	2.2	6.9	9.4	12.6	15.0	18.7	21.6	25.2	65°
●	●	●	●		1590	2.2	6.9	9.4	12.6	15.0	18.7	21.6	25.2	90°
●	●	●	●		15110W	2.2	6.9	9.4	12.6	15.0	18.7	21.6	25.2	110°
	●	●	●		2065	2.5	9.3	12.5	16.8	20.0	24.9	28.8	33.6	65°
	●	●	●		2090	2.5	9.3	12.5	16.8	20.0	24.9	28.8	33.6	90°
	●	●	●		20110W	2.5	9.3	12.5	16.8	20.0	24.9	28.8	33.6	110°
		●	●		2565	2.8	11.6	15.6	21.0	25.0	31.2	36.0	42.0	65°
		●	●		2590	2.8	11.6	15.6	21.0	25.0	31.2	36.0	42.0	90°
		●	●		25110W	2.8	11.6	15.6	21.0	25.0	31.2	36.0	42.0	110°
		●	●		3065	3.1	13.9	18.7	25.2	30.0	37.4	43.2	50.4	65°
		●	●		3090	3.1	13.9	18.7	25.2	30.0	37.4	43.2	50.4	90°
		●	●		30110W	3.1	13.9	18.7	25.2	30.0	37.4	43.2	50.4	110°
		●	●		3565	3.4	16.2	21.8	29.4	35.0	43.6	50.4	58.8	65°
		●	●		3590	3.4	16.2	21.8	29.4	35.0	43.6	50.4	58.8	90°
		●	●		35110W	3.4	16.2	21.8	29.4	35.0	43.6	50.4	58.8	110°
			●	●	4065	3.7	18.5	25.0	33.6	40.0	49.9	57.6	67.2	65°
			●	●	4090	3.7	18.5	25.0	33.6	40.0	49.9	57.6	67.2	90°
			●	●	40110W	3.7	18.5	25.0	33.6	40.0	49.9	57.6	67.2	110°
			●	●	4565	4.0	20.8	28.1	37.8	45.0	56.1	64.8	75.6	65°
			●	●	4590	4.0	20.8	28.1	37.8	45.0	56.1	64.8	75.6	90°
			●	●	45110W	4.0	20.8	28.1	37.8	45.0	56.1	64.8	75.6	110°
			●	●	5065	4.3	23.2	31.2	42.0	50.0	62.3	72.0	84.0	65°
			●	●	5090	4.3	23.2	31.2	42.0	50.0	62.3	72.0	84.0	90°
			●	●	50110W	4.3	23.2	31.2	42.0	50.0	62.3	72.0	84.0	110°
				●	6065	4.6	27.8	37.4	50.4	60.0	74.8	86.4	101	65°
				●	6090	4.6	27.8	37.4	50.4	60.0	74.8	86.4	101	90°
				●	60110W	4.6	27.8	37.4	50.4	60.0	74.8	86.4	101	110°
				●	7065	4.9	32.4	43.7	58.8	70.0	87.3	101	118	65°
				●	7090	4.9	32.4	43.7	58.8	70.0	87.3	101	118	90°
				●	70110W	4.9	32.4	43.7	58.8	70.0	87.3	101	118	110°
				●	8065	5.2	37.1	49.9	67.3	80.0	99.7	115	134	65°
				●	8090	5.2	37.1	49.9	67.3	80.0	99.7	115	134	90°
				●	80110W	5.2	37.1	49.9	67.3	80.0	99.7	115	134	110°
				●	9065	5.6	41.7	56.2	75.7	90.0	112	130	151	65°
				●	9090	5.6	41.7	56.2	75.7	90.0	112	130	151	90°
				●	90110W	5.6	41.7	56.2	75.7	90.0	112	130	151	110°

Full-cone Pattern Nozzles

B
20

Square Spray Nozzle Integral type

● Standard type model number list (model: KS····SQH / KS····SQI, thread size: 1/4 to 1) ●: Model availability

Female thrd size					Model number	Minimum orifice diameter [mm]	Flow rate [L/min] at following pressure [MPa]							Spray angle at 0.3 MPa
1/4	3/8	1/2	3/4	1			0.05	0.1	0.2	0.3	0.5	0.7	1.0	
●					00865	0.5	0.37	0.50	0.67	0.80	1.00	1.15	1.34	65°
●					00890	0.5	0.37	0.50	0.67	0.80	1.00	1.15	1.34	90°
●					0165	0.6	0.46	0.62	0.84	1.00	1.25	1.44	1.68	65°
●					0190	0.6	0.46	0.62	0.84	1.00	1.25	1.44	1.68	90°
●	●				01565	0.7	0.68	0.94	1.26	1.50	1.87	2.2	2.5	65°
●	●				01590	0.7	0.68	0.94	1.26	1.50	1.87	2.2	2.5	90°
●	●				0265	0.8	0.93	1.25	1.68	2.0	2.5	2.9	3.4	65°
●	●				0290	0.8	0.93	1.25	1.68	2.0	2.5	2.9	3.4	90°
●	●	●			0365	1.0	1.39	1.87	2.5	3.0	3.7	4.3	5.0	65°
●	●	●			0390	1.0	1.39	1.87	2.5	3.0	3.7	4.3	5.0	90°
●	●	●			0465	1.2	1.85	2.5	3.4	4.0	5.0	5.8	6.7	65°
●	●	●			0490	1.2	1.85	2.5	3.4	4.0	5.0	5.8	6.7	90°
●	●	●			04110W	1.2	1.85	2.5	3.4	4.0	5.0	5.8	6.7	110°
●	●	●			0665	1.4	2.8	3.7	5.0	6.0	7.5	8.6	10.1	65°
●	●	●			0690	1.4	2.8	3.7	5.0	6.0	7.5	8.6	10.1	90°
●	●	●			06110W	1.4	2.8	3.7	5.0	6.0	7.5	8.6	10.1	110°
●	●	●			0865	1.6	3.7	5.0	6.7	8.0	10.0	11.5	13.4	65°
●	●	●			0890	1.6	3.7	5.0	6.7	8.0	10.0	11.5	13.4	90°
●	●	●			08110W	1.6	3.7	5.0	6.7	8.0	10.0	11.5	13.4	110°
●	●	●	●		1065	1.9	4.6	6.2	8.4	10.0	12.5	14.4	16.8	65°
●	●	●	●		1090	1.9	4.6	6.2	8.4	10.0	12.5	14.4	16.8	90°
●	●	●	●		10110W	1.9	4.6	6.2	8.4	10.0	12.5	14.4	16.8	110°
	●	●	●		1565	2.2	6.9	9.4	12.6	15.0	18.7	21.6	25.2	65°
	●	●	●		1590	2.2	6.9	9.4	12.6	15.0	18.7	21.6	25.2	90°
	●	●	●		15110W	2.2	6.9	9.4	12.6	15.0	18.7	21.6	25.2	110°
	●	●	●		2065	2.5	9.3	12.5	16.8	20.0	24.9	28.8	33.6	65°
	●	●	●		2090	2.5	9.3	12.5	16.8	20.0	24.9	28.8	33.6	90°
	●	●	●		20110W	2.5	9.3	12.5	16.8	20.0	24.9	28.8	33.6	110°
		●	●		2565	2.8	11.6	15.6	21.0	25.0	31.2	36.0	42.0	65°
		●	●		2590	2.8	11.6	15.6	21.0	25.0	31.2	36.0	42.0	90°
		●	●		25110W	2.8	11.6	15.6	21.0	25.0	31.2	36.0	42.0	110°
		●	●		3065	3.1	13.9	18.7	25.2	30.0	37.4	43.2	50.4	65°
		●	●		3090	3.1	13.9	18.7	25.2	30.0	37.4	43.2	50.4	90°
		●	●		30110W	3.1	13.9	18.7	25.2	30.0	37.4	43.2	50.4	110°
		●	●		3565	3.4	16.2	21.8	29.4	35.0	43.6	50.4	58.8	65°
		●	●		3590	3.4	16.2	21.8	29.4	35.0	43.6	50.4	58.8	90°
		●	●		35110W	3.4	16.2	21.8	29.4	35.0	43.6	50.4	58.8	110°
			●	●	4065	3.7	18.5	25.0	33.6	40.0	49.9	57.6	67.2	65°
			●	●	4090	3.7	18.5	25.0	33.6	40.0	49.9	57.6	67.2	90°
			●	●	40110W	3.7	18.5	25.0	33.6	40.0	49.9	57.6	67.2	110°
			●	●	4565	4.0	20.8	28.1	37.8	45.0	56.1	64.8	75.6	65°
			●	●	4590	4.0	20.8	28.1	37.8	45.0	56.1	64.8	75.6	90°
			●	●	45110W	4.0	20.8	28.1	37.8	45.0	56.1	64.8	75.6	110°
			●	●	5065	4.3	23.2	31.2	42.0	50.0	62.3	72.0	84.0	65°
			●	●	5090	4.3	23.2	31.2	42.0	50.0	62.3	72.0	84.0	90°
			●	●	50110W	4.3	23.2	31.2	42.0	50.0	62.3	72.0	84.0	110°
				●	6065	4.6	27.8	37.4	50.4	60.0	74.8	86.4	101	65°
				●	6090	4.6	27.8	37.4	50.4	60.0	74.8	86.4	101	90°
				●	60110W	4.6	27.8	37.4	50.4	60.0	74.8	86.4	101	110°
				●	7065	4.9	32.4	43.7	58.8	70.0	87.3	101	118	65°
				●	7090	4.9	32.4	43.7	58.8	70.0	87.3	101	118	90°
				●	70110W	4.9	32.4	43.7	58.8	70.0	87.3	101	118	110°
				●	8065	5.2	37.1	49.9	67.3	80.0	99.7	115	134	65°
				●	8090	5.2	37.1	49.9	67.3	80.0	99.7	115	134	90°
				●	80110W	5.2	37.1	49.9	67.3	80.0	99.7	115	134	110°
				●	9065	5.6	41.7	56.2	75.7	90.0	112	130	151	65°
				●	9090	5.6	41.7	56.2	75.7	90.0	112	130	151	90°
				●	90110W	5.6	41.7	56.2	75.7	90.0	112	130	151	110°
				●	10065	5.9	46.3	62.4	84.1	100	125	144	168	65°
				●	10090	5.9	46.3	62.4	84.1	100	125	144	168	90°
				●	100110W	5.9	46.6	62.4	84.1	100	125	144	168	110°

● Standard type model number list (model: KS····SQHH / KS····SQI, thread size: 1¹/₄ to 2¹/₂) ●: Model availability

Male thread size KS····SQHH				Male thread size KS····SQI				Model number	Minimum orifice diameter [mm]	Flow rate [L/min] at following pressure [MPa]							Spray angle at 0.3 MPa
1 ¹ / ₄	1 ¹ / ₂	2	2 ¹ / ₂	1 ¹ / ₄	1 ¹ / ₂	2	2 ¹ / ₂			0.05	0.1	0.2	0.3	0.5	0.7	1.0	
●				●						6065	4.6	27.8	37.4	50.4	60.0	74.8	
●				●				6090	4.6	27.8	37.4	50.4	60.0	74.7	86.4	101	90°
●				●				60110W	4.6	27.8	37.4	50.4	60.0	74.8	86.4	101	110°
●				●				7065	4.9	32.4	43.7	58.8	70.0	87.3	101	118	65°
●				●				7090	4.9	32.4	43.7	58.8	70.0	87.3	101	118	90°
●				●				70110W	4.9	32.4	43.7	58.8	70.0	87.3	101	118	110°
●				●				8065	5.2	37.1	49.9	67.3	80.0	99.7	115	134	65°
●				●				8090	5.2	37.1	49.9	67.3	80.0	99.7	115	134	90°
●				●				80110W	5.2	37.1	49.9	67.3	80.0	99.7	115	134	110°
●				●				9065	5.6	41.7	56.2	75.7	90.0	112	130	151	65°
●				●				9090	5.6	41.7	56.2	75.7	90.0	112	130	151	90°
●				●				90110W	5.6	41.7	56.2	75.7	90.0	112	130	151	110°
●	●			●	●			10065	5.9	46.3	62.4	84.1	100	125	144	168	65°
●	●			●	●			10090	5.9	46.3	62.4	84.1	100	125	144	168	90°
●	●			●	●			100110W	5.9	46.3	62.4	84.1	100	125	144	168	110°
●	●			●	●			12565	6.6	57.9	78.0	105	125	156	180	210	65°
●	●			●	●			12590	6.6	57.9	78.0	105	125	156	180	210	90°
●	●			●	●			125110W	6.6	57.9	78.0	105	125	156	180	210	110°
	●			●	●			15065	7.2	69.5	93.6	126	150	187	216	252	65°
	●			●	●			15090	7.2	69.5	93.6	126	150	187	216	252	90°
	●			●	●			150110W	7.2	69.5	93.6	126	150	187	216	252	110°
	●			●				17565	7.8	81.1	109	147	175	218	252	294	65°
	●			●				17590	7.8	81.1	109	147	175	218	252	294	90°
	●			●				175110W	7.8	81.1	109	147	175	218	252	294	110°
	●	●		●	●			20065	8.4	92.6	125	168	200	249	288	336	65°
	●	●		●	●			20090	8.4	92.6	125	168	200	249	288	336	90°
	●	●		●	●			200110W	8.4	92.6	125	168	200	249	288	336	110°
		●		●	●			22565	8.9	104	140	189	225	280	324	376	65°
		●		●	●			22590	8.9	104	140	189	225	280	324	376	90°
		●		●	●			225110W	8.9	104	140	189	225	280	324	376	110°
		●		●	●			25065	9.4	116	156	210	250	312	360	420	65°
		●		●	●			25090	9.4	116	156	210	250	312	360	420	90°
		●		●	●			250110W	9.4	116	156	210	250	312	360	420	110°
		●		●	●			2765	9.9	127	172	231	275	343	396	462	65°
		●		●	●			2759	9.9	127	172	231	275	343	396	462	90°
		●		●	●			275110W	9.9	127	172	231	275	343	396	462	110°
		●		●				30065	10.3	139	187	252	300	374	432	504	65°
		●		●				30090	10.3	139	187	252	300	374	432	504	90°
		●		●				300110W	10.3	139	187	252	300	374	432	504	110°
		●		●				32565	10.7	151	203	273	325	405	468	546	65°
		●		●				32590	10.7	151	203	273	325	405	468	546	90°
		●		●				325110W	10.7	151	203	273	325	405	468	546	110°
		●		●				3065	11.1	162	218	294	350	436	504	588	65°
		●		●				35090	11.1	162	218	294	350	436	504	588	90°
		●		●				350110W	11.1	162	218	294	350	436	504	588	110°
		●	●		●	●		40065	11.9	185	250	336	400	499	576	672	65°
		●	●		●	●		40090	11.9	185	250	336	400	499	576	672	90°
		●	●		●	●		400110W	11.9	185	250	336	400	499	576	672	110°
				●	●			50065	13.3	232	312	420	500	623	720	840	65°
				●	●			50090	13.3	232	312	420	500	623	720	840	90°
				●	●			500110W	13.3	232	312	420	500	623	720	840	110°
				●				60065	14.5	278	374	504	600	748	864	1008	65°
				●				60090	14.5	278	374	504	600	748	864	1008	90°
				●				600110W	14.5	278	374	504	600	748	864	1008	110°
				●				70065	15.7	324	437	588	700	873	1008	1176	65°
				●				70090	15.7	324	437	588	700	873	1008	1176	90°
				●				700110W	15.7	324	437	588	700	873	1008	1176	110°
				●				80065	16.8	371	499	673	800	997	1153	1344	65°
				●				80090	16.8	371	499	673	800	997	1153	1344	90°
				●				800110W	16.8	371	499	673	800	997	1153	1344	110°

Square Spray Nozzle Flange type



▶ Feature

- Spray pattern of square.

▶ Applications

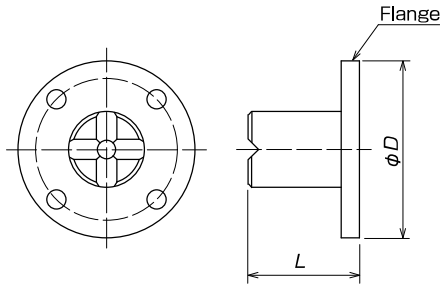
- Wastewater treatment, dust prevention.
- Seawater desalination, deaerators in plants.

▶ Materials

- 304 Stainless steel

Shapes and dimensions

● KS····SQF



Model	Dimension [mm]		Flange size	Weight [kg]
	D	L		
3 KS····SQF	180	170	3 B	7
4 KS····SQF	200	215	4 B	13
5 KS····SQF	235	275	5 B	21
6 KS····SQF	265	340	6 B	30
8 KS····SQF	320	440	8 B	66

*Flanges conform to JIS 5K flanges as a standard specification.

● Standard type model number list (model: KS····SQF, flange size: 3B to 8B)

● : Model availability

Flange size					Model number	Minimum orifice diameter [mm]	Flow rate [L/min] at following pressure [MPa]						Spray angle at 0.07 MPa	
3B	4B	5B	6B	8B			0.03	0.05	0.07	0.1	0.15	0.2		0.3
●					90065	17	335	417	482	562	669	757	900	65°
●					90090	17	335	417	482	562	669	757	900	90°
●					100065	18	372	463	535	624	743	841	1000	65°
●					100090	18	372	463	535	624	743	841	1000	90°
	●				125065	20	465	579	669	780	929	1051	1250	65°
	●				125090	20	465	579	669	780	929	1051	1250	90°
	●				150065	22	558	695	803	936	1114	1261	1500	65°
	●				150090	22	558	695	803	936	1114	1261	1500	90°
		●			175065	24	651	811	937	1092	1300	1471	1750	65°
		●			175090	24	651	811	937	1092	1300	1471	1750	90°
		●			200065	26	744	926	1071	1248	1486	1681	2000	65°
		●			200090	26	744	926	1071	1248	1486	1681	2000	90°
		●			250065	29	930	1158	1338	1560	1857	2102	2500	65°
		●			250090	29	930	1158	1338	1560	1857	2102	2500	90°
			●		300065	32	1115	1390	1606	1872	2229	2522	3000	65°
			●		300090	32	1115	1390	1606	1872	2229	2522	3000	90°
			●		350065	34	1301	1621	1873	2184	2600	2942	3500	65°
			●		350090	34	1301	1621	1873	2184	2600	2942	3500	90°
			●		400065	37	1487	1853	2141	2496	2971	3363	4000	65°
			●		400090	37	1487	1853	2141	2496	2971	3363	4000	90°
				●	500065	41	1859	2316	2676	3120	3714	4203	5000	65°
				●	500090	41	1859	2316	2676	3120	3714	4203	5000	90°
				●	600065	45	2231	2779	3212	3744	4457	5044	6000	65°
				●	600090	45	2231	2779	3212	3744	4457	5044	6000	90°

* Method to calculate spray angles

- The spray angle is calculated from the spray opposite side distance at a distance of 1000 mm when spraying downward.

● Standard type model number list (model: KS····SQI, thread size: 3 to 8)

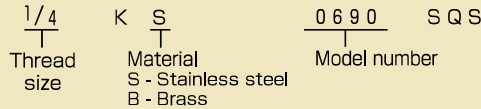
● : Model availability

Female thrd size					Model number	Minimum orifice diameter [mm]	Flow rate [L/min] at following pressure [MPa]							Spray angle at 0.07 MPa
3	4	5	6	8			0.03	0.05	0.07	0.1	0.15	0.2	0.3	
●					90065	17	335	417	482	562	669	757	900	65°
●					90090	17	335	417	482	562	669	757	900	90°
●					100065	18	372	463	535	624	743	841	1000	65°
●					100090	18	372	463	535	624	743	841	1000	90°
	●				125065	20	465	579	669	780	929	1051	1250	65°
	●				125090	20	465	579	669	780	929	1051	1250	90°
	●				150065	22	558	695	803	936	1114	1261	1500	65°
	●				150090	22	558	695	803	936	1114	1261	1500	90°
		●			175065	24	651	811	937	1092	1300	1471	1750	65°
		●			175090	24	651	811	937	1092	1300	1471	1750	90°
		●			200065	26	744	926	1071	1248	1486	1681	2000	65°
		●			200090	26	744	926	1071	1248	1486	1681	2000	90°
		●			250065	29	930	1158	1338	1560	1857	2102	2500	65°
		●			250090	29	930	1158	1338	1560	1857	2102	2500	90°
			●		300065	32	1115	1390	1606	1872	2229	2522	3000	65°
			●		300090	32	1115	1390	1606	1872	2229	2522	3000	90°
			●		350065	34	1301	1621	1873	2184	2600	2942	3500	65°
			●		350090	34	1301	1621	1873	2184	2600	2942	3500	90°
			●		400065	37	1487	1853	2141	2496	2971	3363	4000	65°
			●		400090	37	1487	1853	2141	2496	2971	3363	4000	90°
				●	500065	41	1859	2316	2676	3120	3714	4203	5000	65°
				●	500090	41	1859	2316	2676	3120	3714	4203	5000	90°
				●	600065	45	2231	2779	3212	3744	4457	5044	6000	65°
				●	600090	45	2231	2779	3212	3744	4457	5044	6000	90°

* Method to calculate spray angles

- The spray angle for nozzle model numbers 80110W or less is calculated from the spray opposite side distance at a distance of 300 mm when spraying downward.
- The spray angle for nozzle model numbers 9065 or more and 80090 or less is calculated from the spray opposite side distance at a distance of 500 mm when spraying downward.
- The spray angle for nozzle model numbers 90065 or more is calculated from the spray opposite side distance at a distance of 1000 mm when spraying downward.

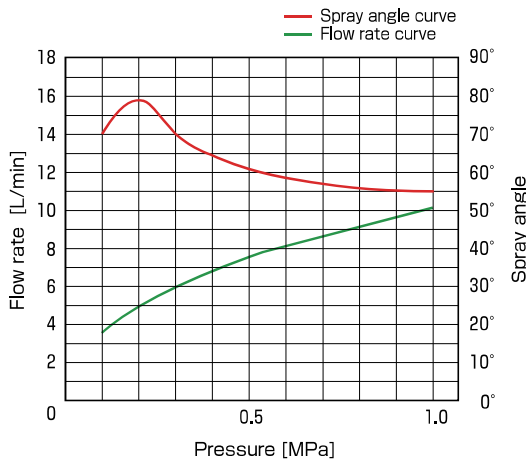
● Model and Model Number representing



■ Performance data

Characteristic curves

Nozzle model number 1/4 KB 0670 SQ



Flow distribution

Nozzle model number 1/4 KB 0670 SQ
 Spray distance 300 mm
 Measurement Horizontal distance end to end

